

# Chapter 1. Disassembly & Assembly Guide

---

## 1-3. Disassembly & Assembly

### - Main Section -

#### MS-1 Main Section Disassembly

# Battery Pack, Dummy Card

1)



Slide the lever outward and release the lock.

2)



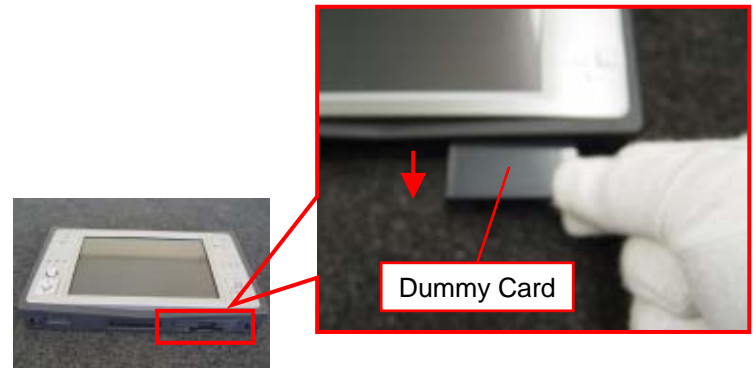
In the state of 1), raise the Battery Pack toward you.

Remark



After removing the Battery Pack

4)

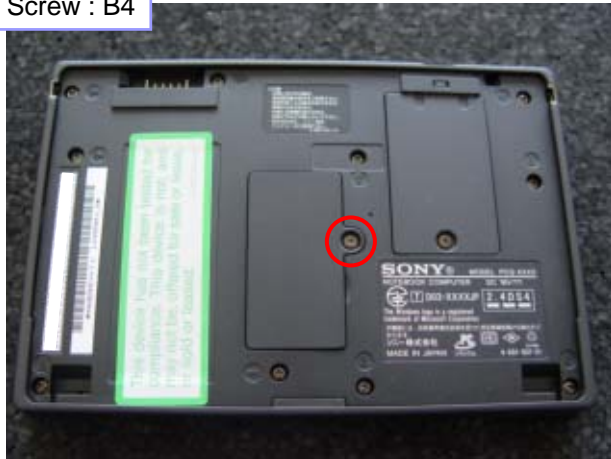


Pull out the Dummy Card in the direction of the arrow.

# Memory

1)

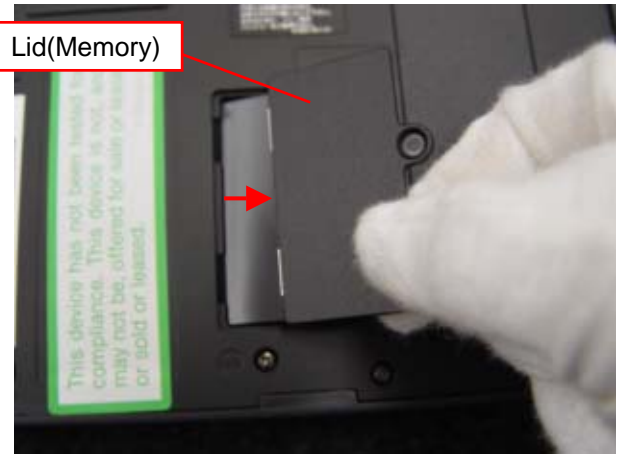
Screw : B4



Remove the one screw.

2)

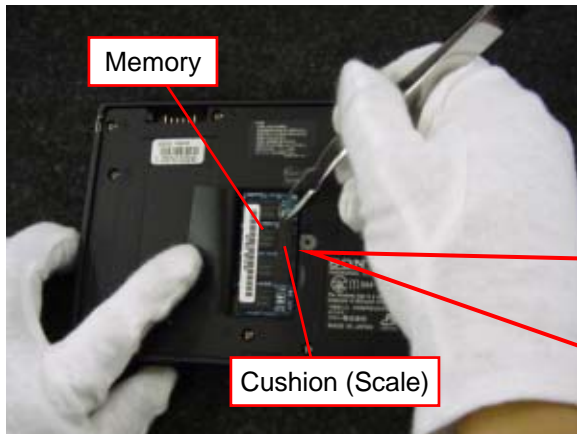
Lid(Memory)



Remove the Lid (Memory).

3)

Memory



Cushion (Scale)

Remove the Memory.

\*It is connected with the connector.

\*Be careful not to damage the Board.



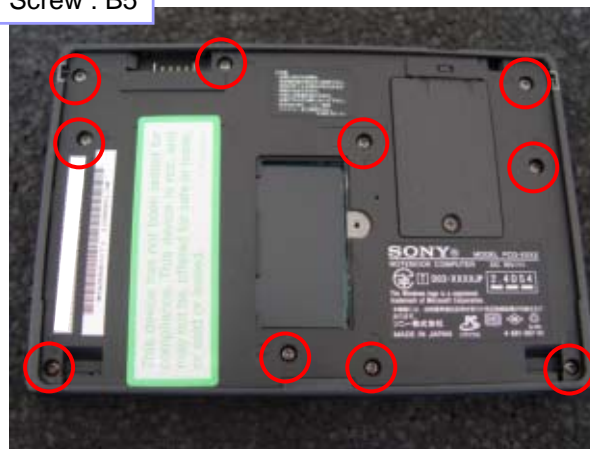
# Cabinet (Bottom)

1) Japanese Models ⚠️ [MA]



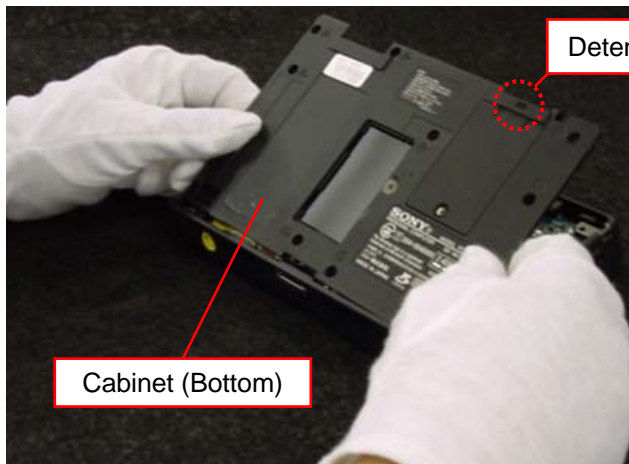
Peel off the Label.

2) Screw : B5



Remove the ten screws.

3) Detent



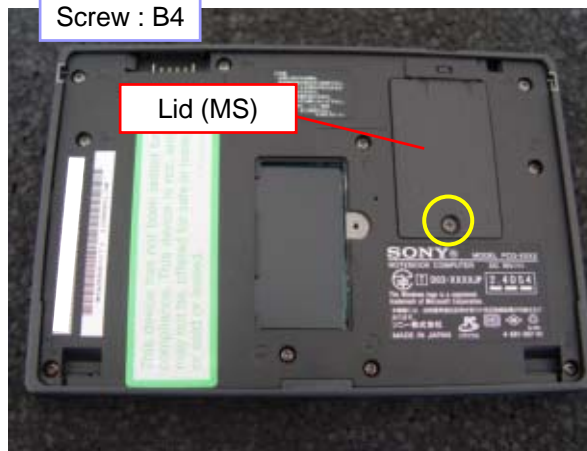
Cabinet (Bottom)

Remove the Cabinet (Bottom).

\*It is recommended to start removing from left side.

Remark

Screw : B4

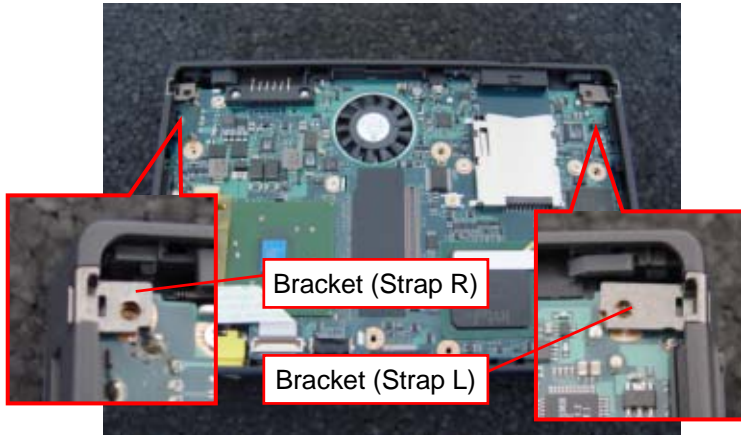


Lid (MS)

After removing the one screw, the Lid (MS) is removable.

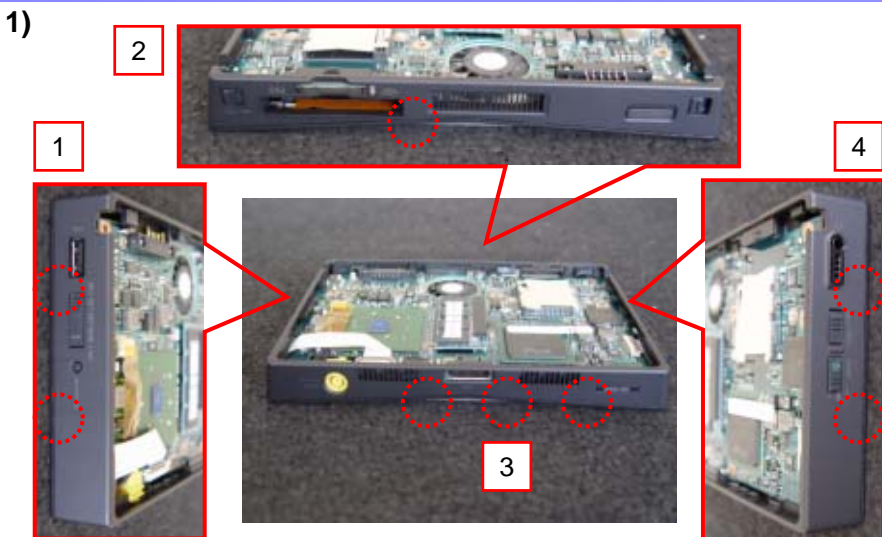
# Bracket (Strap R/L)

1)



Remove the Bracket (two places).

# Escutcheon

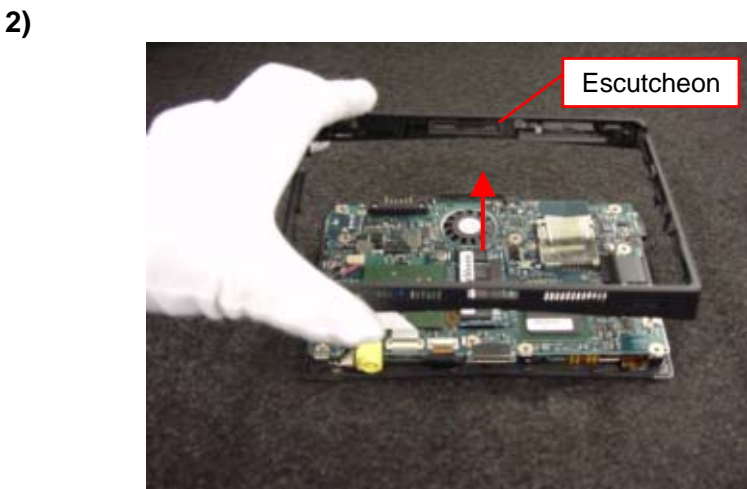


Disengage the detents (eight places) in order.

Remark1

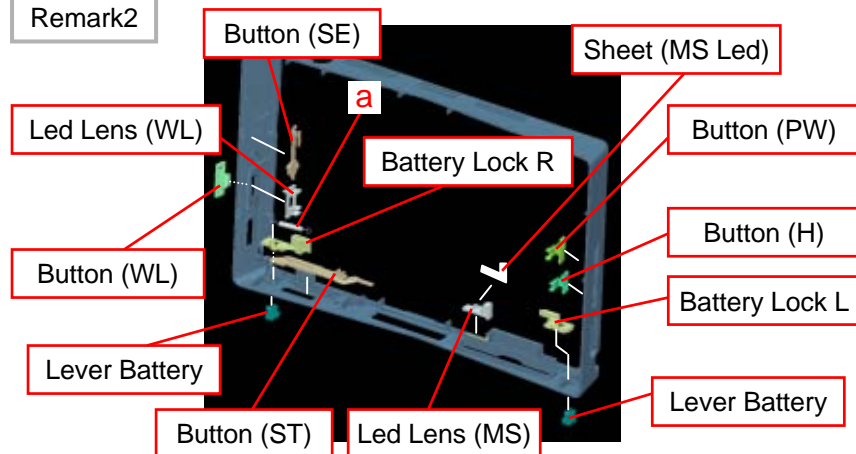


Insert the fingers between the Escutcheon and the Board, outspread the Escutcheon, and disengage the detent.



Remove the Escutcheon.

Remark2

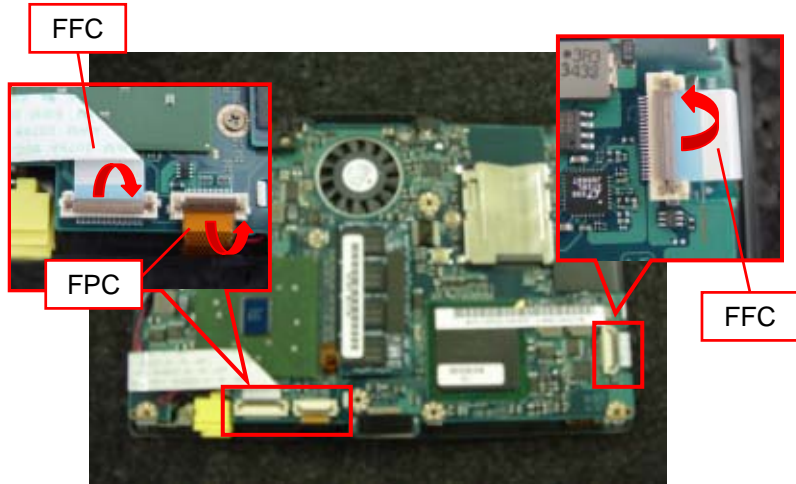


These parts are included in the X-bar of the Escutcheon.

\*The part of a is attached in the Escutcheon, and it does not have a part number.

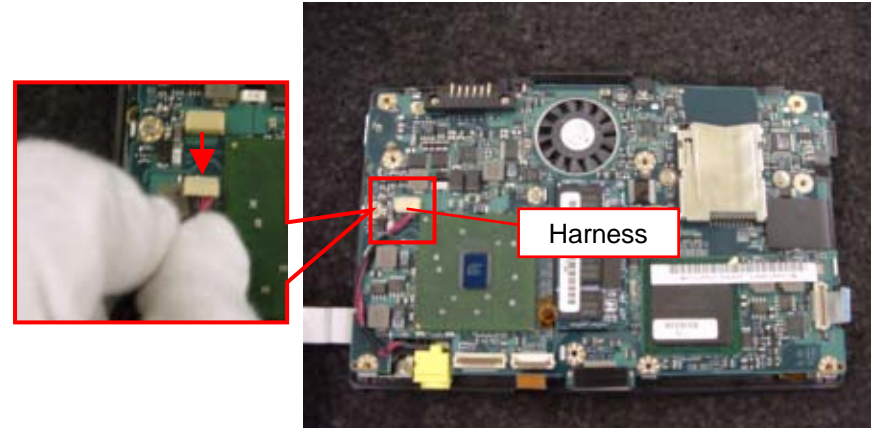
# Mother Board-1

1)



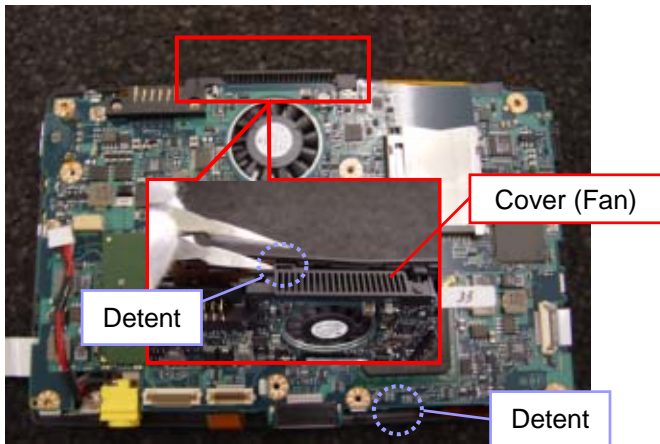
Raise the lock lever and remove the FFC (two places) and FPC (one place).

2)



Disconnect the Harness.

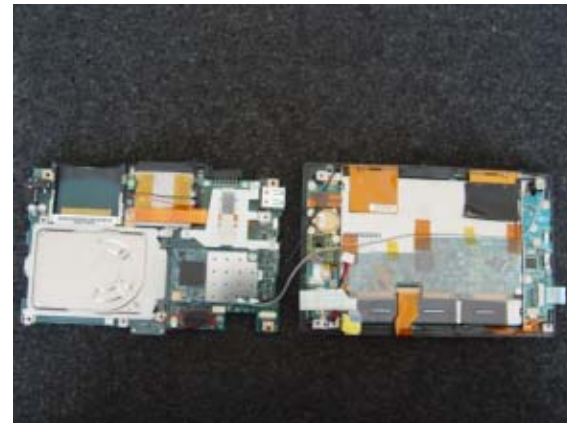
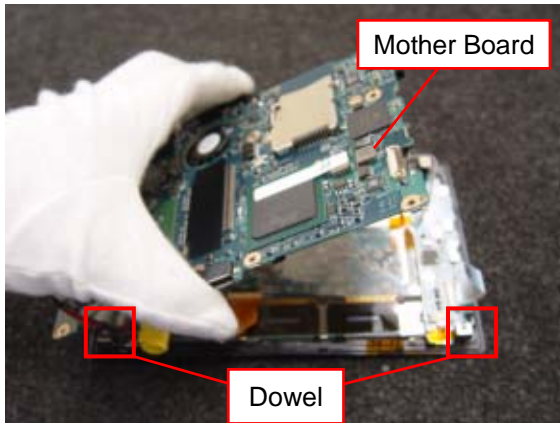
3)



Disengage the detents (two places).

# Mother Board-2

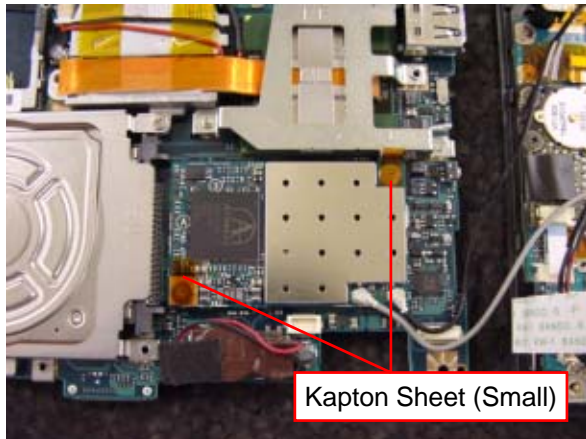
4)



Remove the Mother Board.

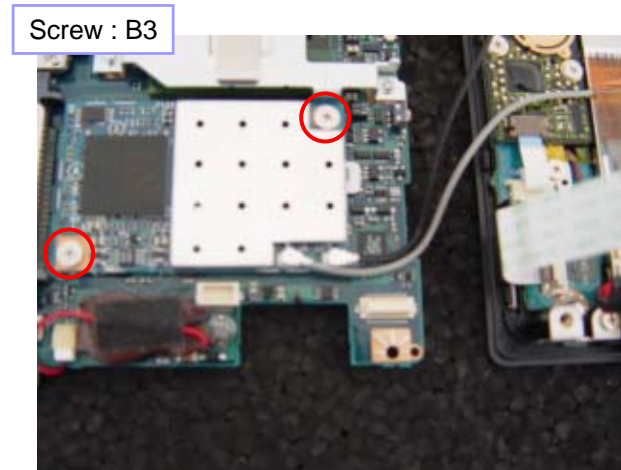
*\*Pay attention to the dowels.*

5)



Peel off the Sheet (two places).

6)

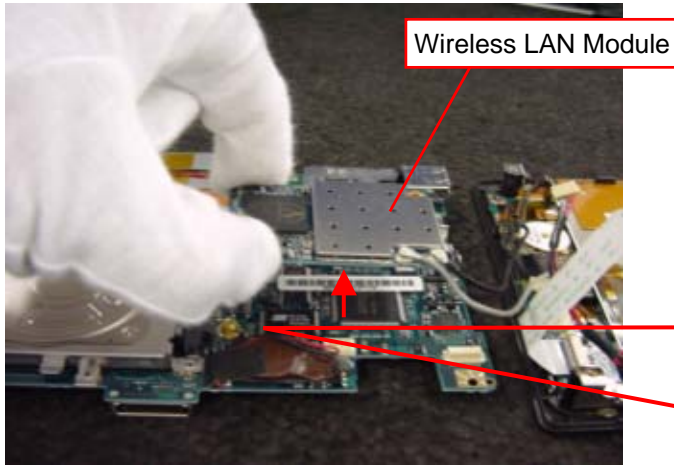


Remove the two screws.

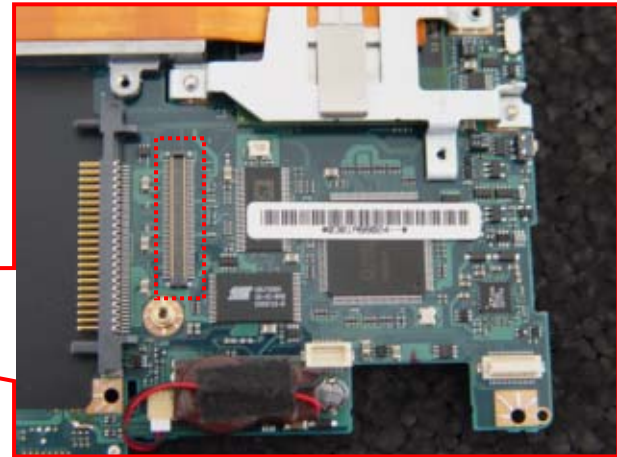


# Mother Board-3

7)



Wireless LAN Module




Remove the Wireless LAN Module.

\*It is connected with the Connector.

# Update History

[ADD]---Addition [DEL]---Deletion [CHG]---Change [COR]---Correction [MA]---Model Addition

Date		Contents	Version No.
2004.11.15		[MA] (Page 4)	2.00